

# DHI License Management

User Guide





## PLEASE NOTE

### **COPYRIGHT**

This document refers to proprietary computer software which is protected by copyright. All rights are reserved. Copying or other reproduction of this manual or the related programs is prohibited without prior written consent of DHI A/S (hereinafter referred to as "DHI"). For details please refer to your 'DHI Software Licence Agreement'.

### **LIMITED LIABILITY**

The liability of DHI is limited as specified in your DHI Software Licence Agreement:

In no event shall DHI or its representatives (agents and suppliers) be liable for any damages whatsoever including, without limitation, special, indirect, incidental or consequential damages or damages for loss of business profits or savings, business interruption, loss of business information or other pecuniary loss arising in connection with the Agreement, e.g. out of Licensee's use of or the inability to use the Software, even if DHI has been advised of the possibility of such damages.

This limitation shall apply to claims of personal injury to the extent permitted by law. Some jurisdictions do not allow the exclusion or limitation of liability for consequential, special, indirect, incidental damages and, accordingly, some portions of these limitations may not apply.

Notwithstanding the above, DHI's total liability (whether in contract, tort, including negligence, or otherwise) under or in connection with the Agreement shall in aggregate during the term not exceed the lesser of EUR 10.000 or the fees paid by Licensee under the Agreement during the 12 months' period previous to the event giving rise to a claim.

Licensee acknowledge that the liability limitations and exclusions set out in the Agreement reflect the allocation of risk negotiated and agreed by the parties and that DHI would not enter into the Agreement without these limitations and exclusions on its liability. These limitations and exclusions will apply notwithstanding any failure of essential purpose of any limited remedy.





# CONTENTS

<b>1</b>	<b>Introduction</b>	<b>7</b>
1.1	The DHI License System	7
<b>2</b>	<b>Installing the DHI License Management</b>	<b>9</b>
<b>3</b>	<b>User Interface</b>	<b>11</b>
<b>4</b>	<b>How-To</b>	<b>13</b>
4.1	How do I import a license file?	13
4.2	How do I connect to a license service?	14
4.3	How do I list the available licenses?	16
4.4	How to enable the Advanced User Interface	17
4.5	How do I see which licenses are in use and by who?	18
4.6	How do I release a license	18
4.7	How do I start and stop the license service?	19
4.8	How can I get a log of license system related events?	21
<b>5</b>	<b>License Administrator Credentials</b>	<b>23</b>
	<b>Index</b>	<b>25</b>





# 1 Introduction

The DHI License Management application is a tool for managing your DHI software licenses. Managing the licenses includes

- importing license files into the license service
- connecting your DHI software applications to a license service
- identifying available licenses
- viewing which licenses are in use by who

Licenses for the software (except Internet) are provided in a text file with the name xxx.dhilic. The license file must be imported into the license system before you can make use of your MIKE software - either on a server or on your local PC.

## 1.1 The DHI License System

The DHI License Management system consists of a license server application (a Windows service) that can be installed on a corporate server, a user's local workstation or on a DHI server. These three deployment modes are named Network mode, Local mode and Internet mode; the mode used in your organization depends on the sales contract between your organization and DHI.

The DHI License Management tool gives you access to three deployment modes

- Network mode
- Local mode and
- Internet mode

The mode available to your organization depends on the sales agreement between your organization and DHI.

Internet mode does not require a separate installation of the DHI License Management tool. The Studio version installed with the software will be sufficient for connecting to the Internet License server.

The MIKE Software applications connect to the license server while running for verifying that there are free licenses available. This is called requesting a license - and if successful, the license becomes "taken". When the application is shut down, it releases the taken license(s) and becomes available.

A MIKE Software application may require multiple licenses (known as license modules) to run; it depends on the features or modules required for carrying out the requested application processing.



The DHI License Management tool can be used for viewing the modules your organization has available together with the number of seats (i.e. the number of licenses for a given module that can be taken at any given time).





## 2 Installing the DHI License Management

If you wish to use Network or Local mode, it is necessary to install the DHI License Management tool. Only the Studio version will be automatically installed with your selected software product.

The tool comes as a separate download for each version. For Local mode, the tool must be installed together with the software package that you would like to use. For Network mode, it must be installed on a server. When you have unzipped the file, please run the setup.exe as Administrator from the "DHI License Manager" folder.

In case you try to connect to localhost and the DHI License Management has not been installed properly, the following error message will appear:

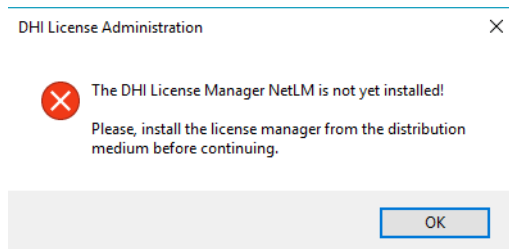


Figure 2.1 Error message from DHI License Management





### 3 User Interface

The DHI License Management tool user interface appears as shown in Figure 3.1 below.

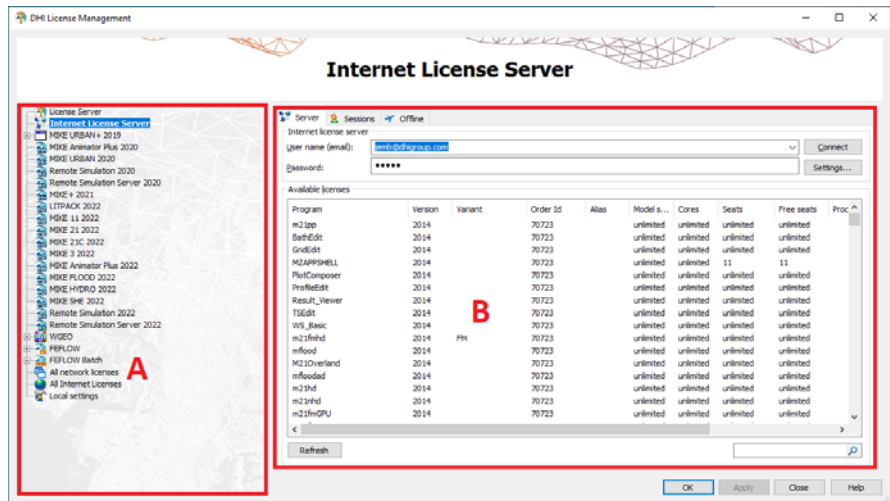


Figure 3.1 The DHI License Management tool user interface

The left panel (A) shows a navigation menu - here you will also be able to see which MIKE software has been installed on this PC, if applicable.

Selecting "All licenses" will enable you to see all the license modules (B) that are available to you with the installed license file. If you select a product, the licenses available for the chosen product will be shown.

See the "How-To" sections below for learning how to use the tool.





How do I import a license file?

## 4 How-To

This section explains how to use the DHI License Management tool for managing your DHI licenses and for connecting to a license server.

### 4.1 How do I import a license file?

DHI licenses for MIKE version 2023 comes packed in a text file with the name xxx.dhiloc2.

Before you install a license file, the “Available Licenses” area is empty.

Please insert your dongle into the server or the PC. The license is imported by selecting License Server at the top of (A).

Then:

- Choose Local host as Host name
- Click the "Import license file..." link below the available licenses list
- Browse and select the supplied xxx.dhiloc2 license file and click Open

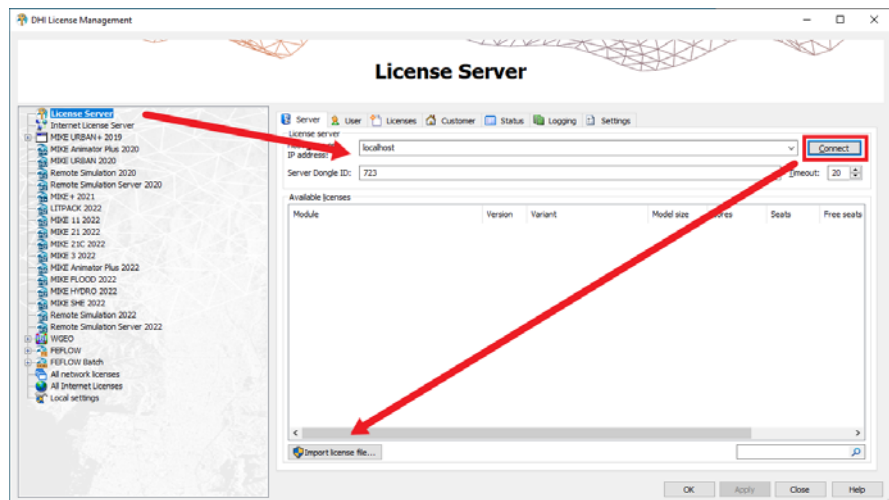


Figure 4.1 Importing license file

If you are working on a PC with the dongle connected and the software installed, you are now ready to use the software.

Please be aware of the following

- You can import a license file to a local license server or a remote one, but



- If you import to a local license server and do not have Windows Administrator rights, you will be prompted for License Administrator Credentials
- If you import to a remote license server, you will always be prompted for License Administrator Credentials

Please note that using the internet license server does not require the import of a license file.

## 4.2 How do I connect to a license service?

The license service may be in one of two modes depending on your license type

1. License service within your organisation (network based)
2. Internet based license

Depending on which of the above licenses you have acquired within your organization the connection procedure varies.

### License service within your organisation

Your DHI software needs access to a license service for requesting the required license modules.

- Select the "License Server" node in the left panel
- In the right panel connect to the license server in your company network
- Click Connect

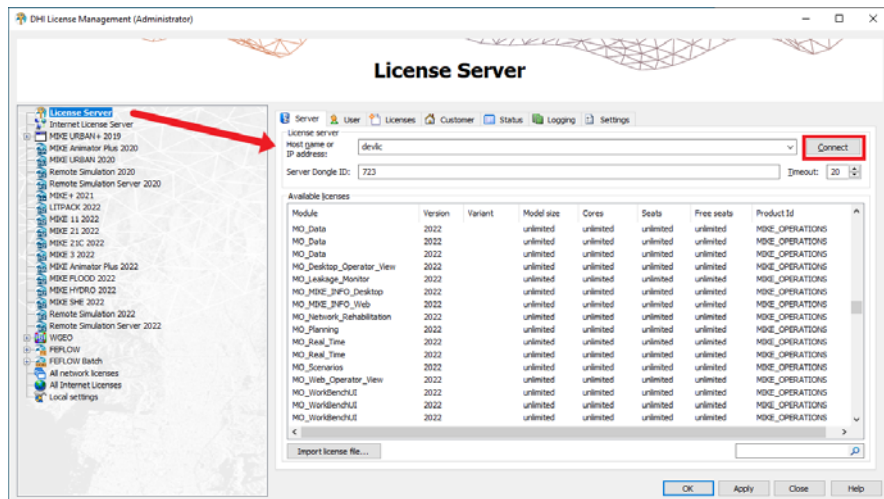


Figure 4.2 Connecting to License server



How do I connect to a license service?

Your organisation's dongle number will now be shown in the "Server Dongle ID" field and the available modules will be displayed.

### Internet based license

On your local PC use the License Administration application for selecting the Internet License server option.

- Select the "Internet License Server" node in the left panel
- In the right panel, enter your User login and your password.
- Click Connect
- The available licenses will be displayed in the lower part of the window

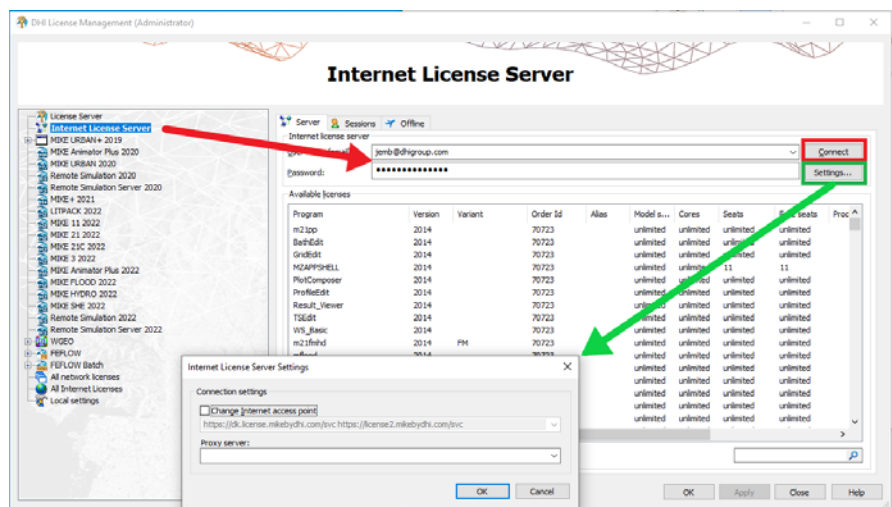


Figure 4.3 Internet license server

A couple of additional settings are available within this window:

- The Internet access point: By default this is set by the installation and should only be modified if instructed to do so by MIKE, Customer Success.
- If your organization utilizes a proxy server for accessing the Internet, please enter the address in the field provided.

A more detailed description of the use and functionality of the Internet based license is included in the **MIKE Internet License User Guide**, which is available from the DHI License Administration Management Documentation Index.



### 4.3 How do I list the available licenses?

You can see the available license by either selecting the "(Internet) License Server" node in the left panel or by selecting a specific product in the left panel.

If you select "License Server" you will see all the licenses in the license database and if you select a product you will see the licenses that relate to the selected product. Please note that not all products have this available.

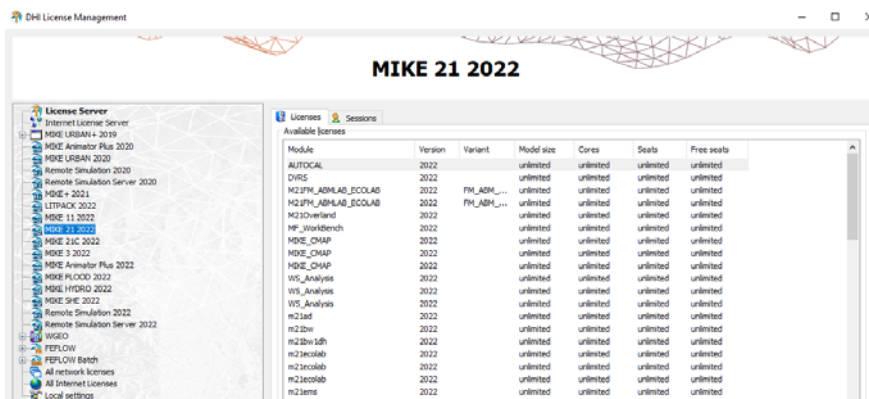


Figure 4.4 List of licenses for a specific product

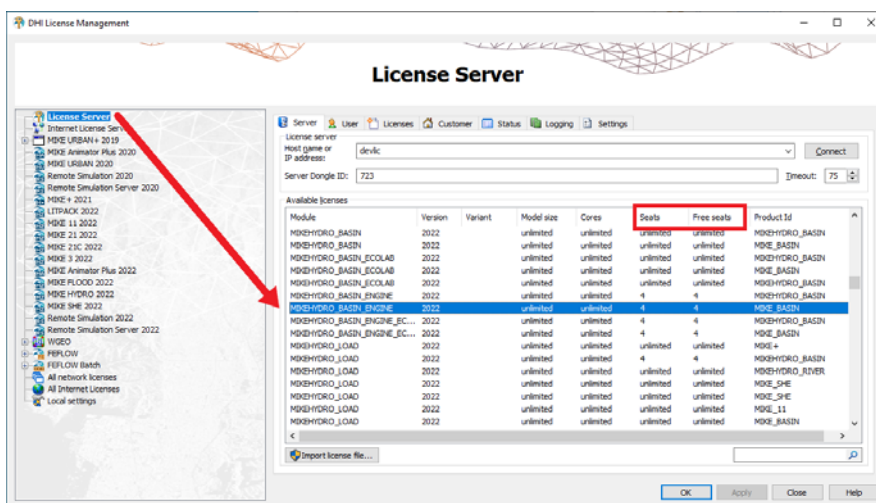


Figure 4.5 List of licenses

The list of available licenses includes the number of seats available for each license module and information on how many of these are in active use.





## How to enable the Advanced User Interface

If you have configured the License Administration tool for running with the Advanced User Interface, you can see the details of a specific license by selecting the license in the Available list and then clicking the License tab.

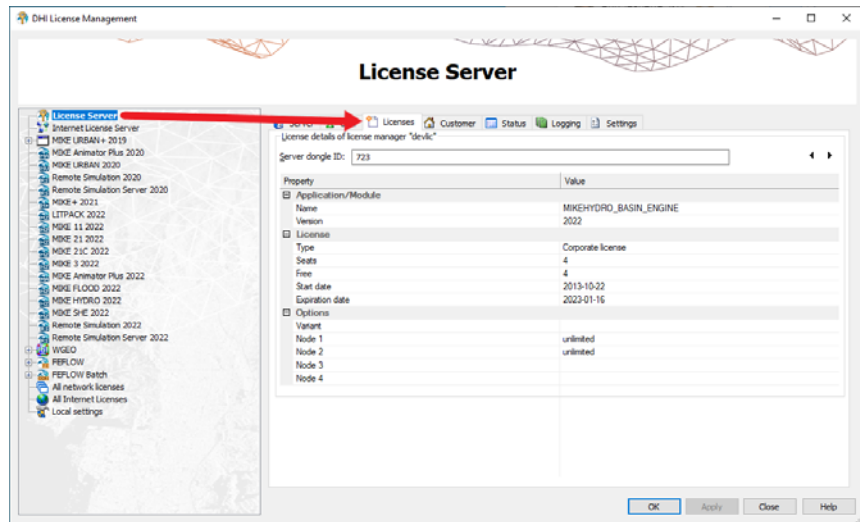


Figure 4.6 License information in the Advanced User Interface

## 4.4 How to enable the Advanced User Interface

It is possible to enable the advanced User Interface under the menu item Local settings as shown in Figure 4.7.

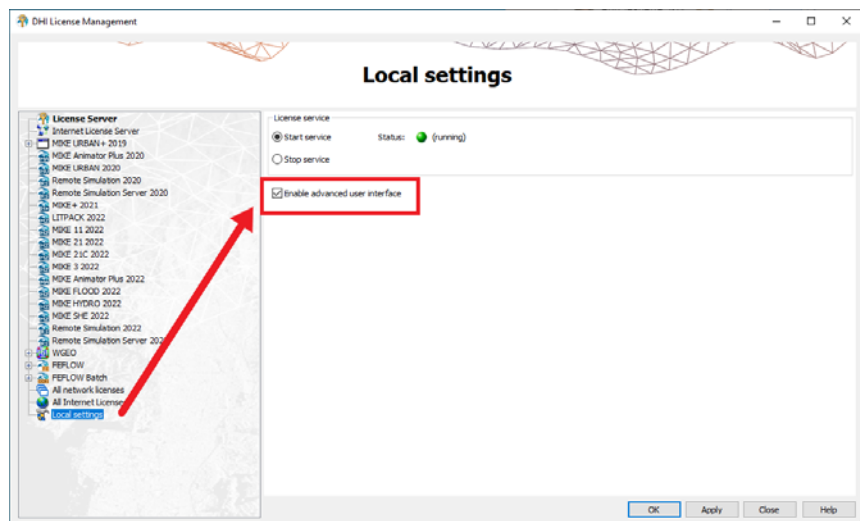


Figure 4.7 Where to enable the advanced user interface



## 4.5 How do I see which licenses are in use and by who?

You can see the licenses that are in active use and by who by selecting the User tab from either the "License Server" view or a product specific view.

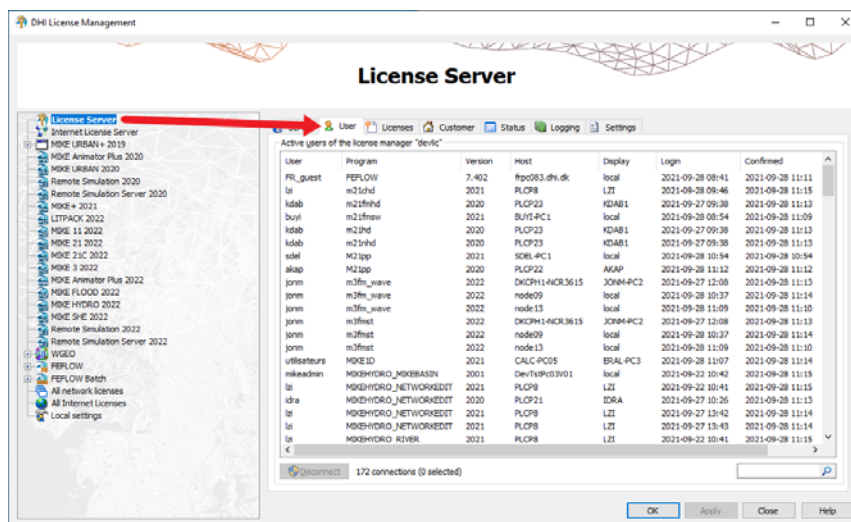


Figure 4.8 List of active users

The User tab shows the licenses that are in active use with information about who is using the license, when the session was started and on which PC.

## 4.6 How do I release a license

In some situations, it may be necessary to remove a user from using certain license modules.

You can disconnect a user by selecting the session(s) in question and clicking disconnect.



How do I start and stop the license service?

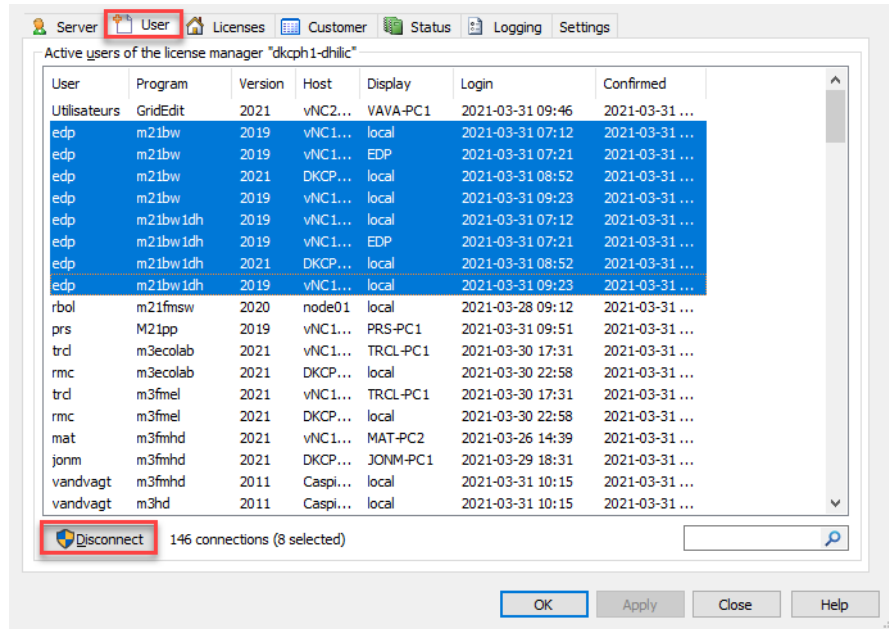


Figure 4.9 Disconnecting license

You will be prompted to enter administrator credentials to disconnect.

## 4.7 How do I start and stop the license service?

You can stop the license service from the Status tab in the 'License Server' view if you have the Advanced User Interface activated.

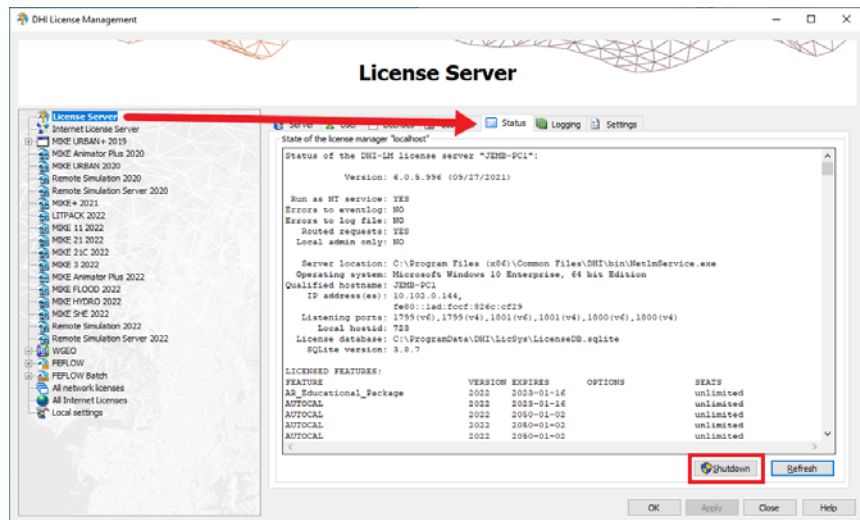


Figure 4.10 Stop license service button in Status User Interface



Note that you need to have license administrator rights to shutdown a running license service remotely. You will be prompted to enter administrator credentials as shown below.

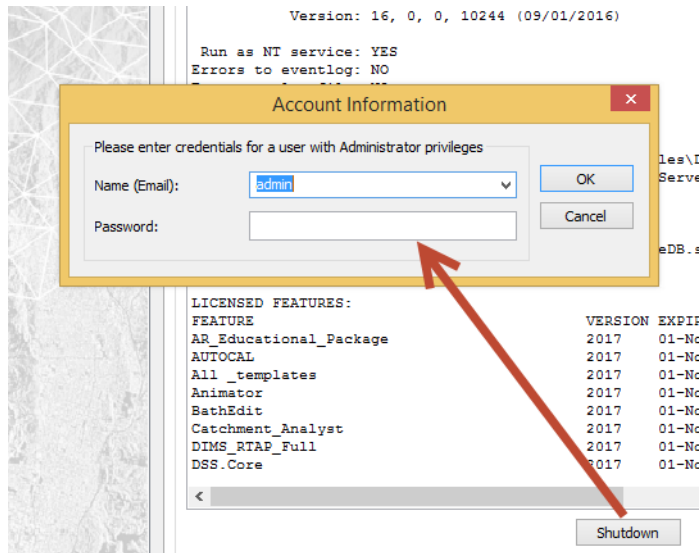


Figure 4.11 Entering administrator credentials

You cannot start a license service remotely; this can only be done from the computer where the license service is installed.

However, you can start a locally installed license service from the Local Settings view on the computer.

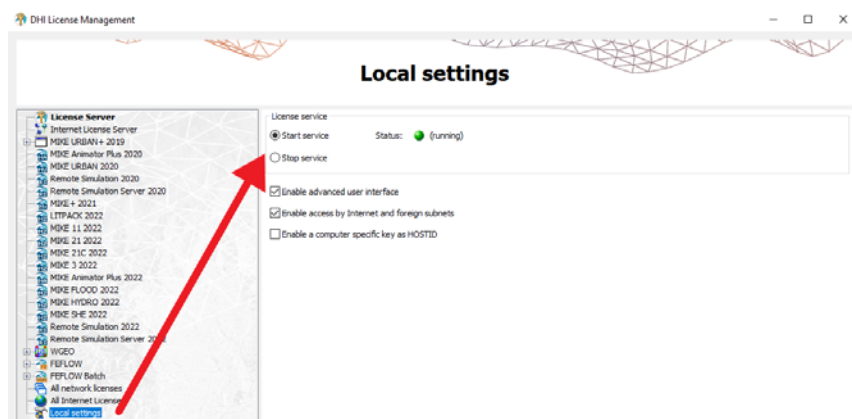


Figure 4.12 Starting local license server



How can I get a log of license system related events?

## 4.8 How can I get a log of license system related events?

You can get a log of the license system events from the 'License Server' logging tab (Advanced User Interface needed).

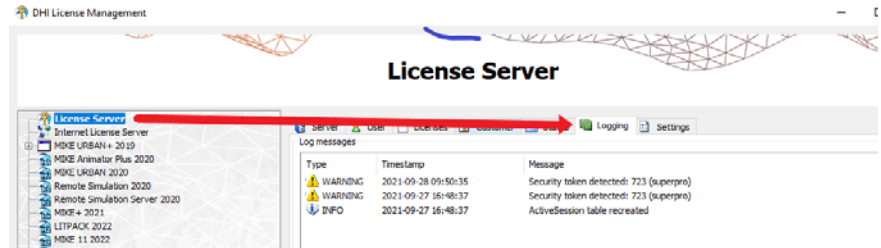


Figure 4.13 Log messages in User Interface

You can also clear the log from this page.

The log level - i.e. the amount and type of logging - can be configured on the Settings tab.

- Error - logs license system errors including failed license requests
- Warning - includes additional warning log messages
- Info - includes all requests including successfully honored license requests
- Debug - includes a large number of internal log messages.  
**NB:** You should only use this level in case of license system malfunctioning and only for a short period of time as it produces a very large number of log messages

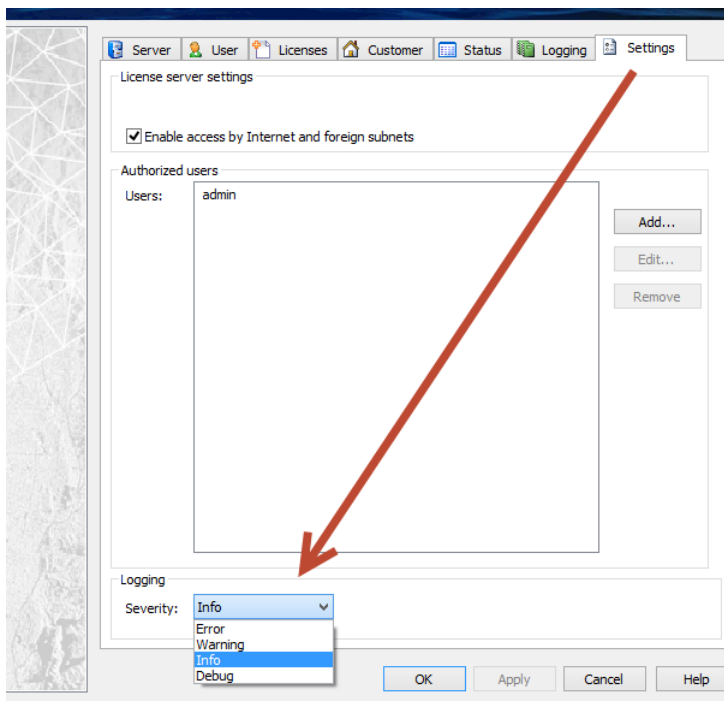


Figure 4.14 Editing log level from Settings tab



How can I get a log of license system related events?

## 5 License Administrator Credentials

You need license administrator credentials for importing a license file, for stopping and starting the license server and for changing log levels.

License administrator credentials are created by:

- Clicking on Advanced user interface on the Local Settings page
- Clicking the Settings tab on the “License Server” page
- Clicking the Add button and creating a new user with Administrator privileges (Role)

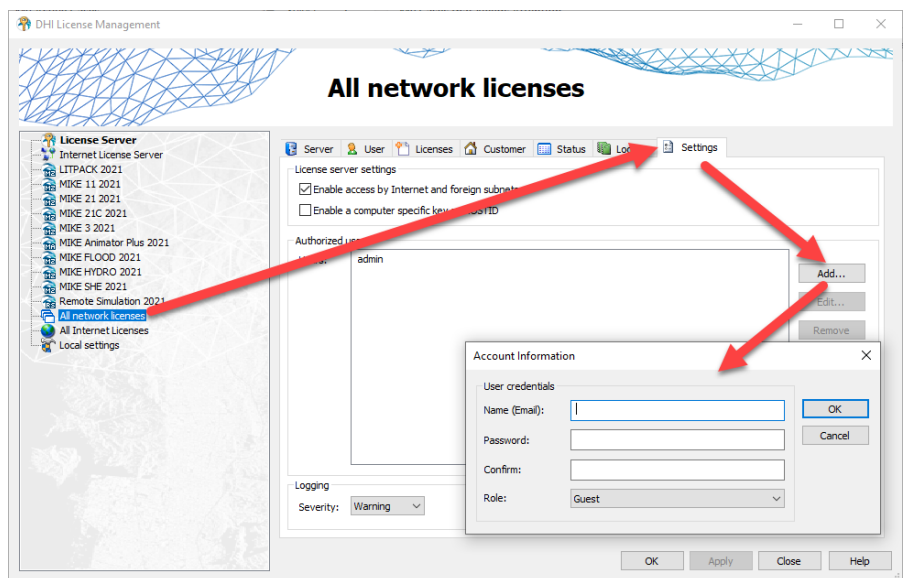


Figure 5.1 Creating License Administrator credentials

When installed the license system includes one user with Administrator credentials - 'admin' and with password 'licadmin'.

**NB:** You should change this password once you start using the system.







# INDEX



**A**  
Advanced User Interface . . . . . 17